

Starlink™ MINI POE DC Cerbo Power kit

Eliminate the Starlink™ MINI's AC power supply and conserve energy with the DC Power Kit. Power the MINI via POE, supplying both power and data through a single CAT6 Ethernet cable to your own WiFi router.

The kit boosts 12V DC to 48V, enabling the MINI to be powered via POE.

<https://starvmount.com/starlink-mini-dc-power-kit.html>

Kit Consists of:

DC2DC 12-48v 240W

<https://starvmount.com/dc2dc-12-48v-240w.html>

DishyNOAC POE 320W

<https://starvmount.com/dishynoac-poe-320w.html>

Mini POE Receiver

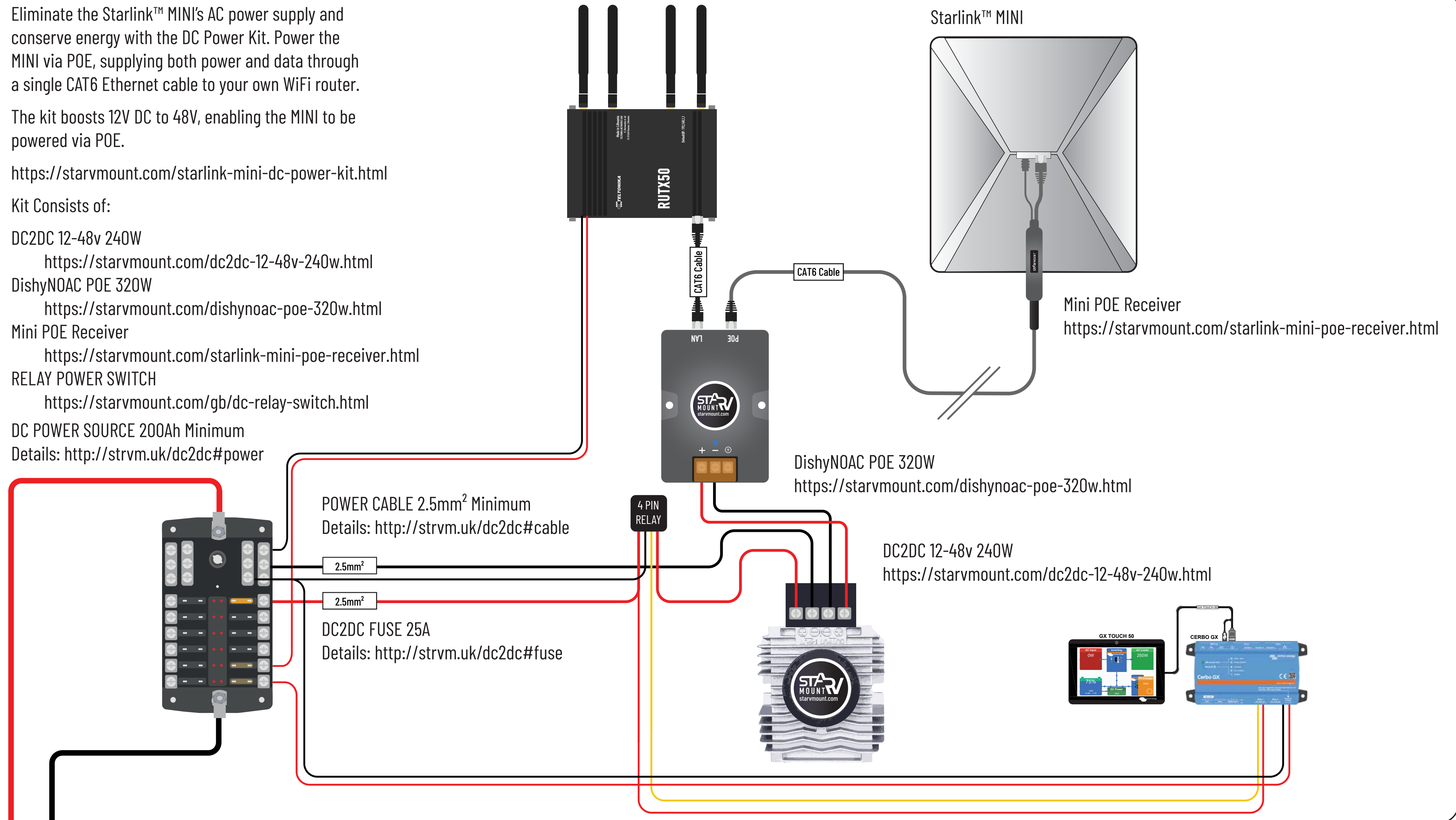
<https://starvmount.com/starlink-mini-poe-receiver.html>

RELAY POWER SWITCH

<https://starvmount.com/gb/dc-relay-switch.html>

DC POWER SOURCE 200Ah Minimum

Details: <http://strvm.uk/dc2dc#power>



CAUTION

Schematic for guidance only. Please verify against manufacturer manuals.

When fitting, undertake your own risk assessment regarding placement and attachment.

Always be considerate of others and your own safety.

Starvmount™ products are intended for installation by telecommunications professionals or other similarly technically experienced users.

Starvmount™ does not accept any liability for installation work